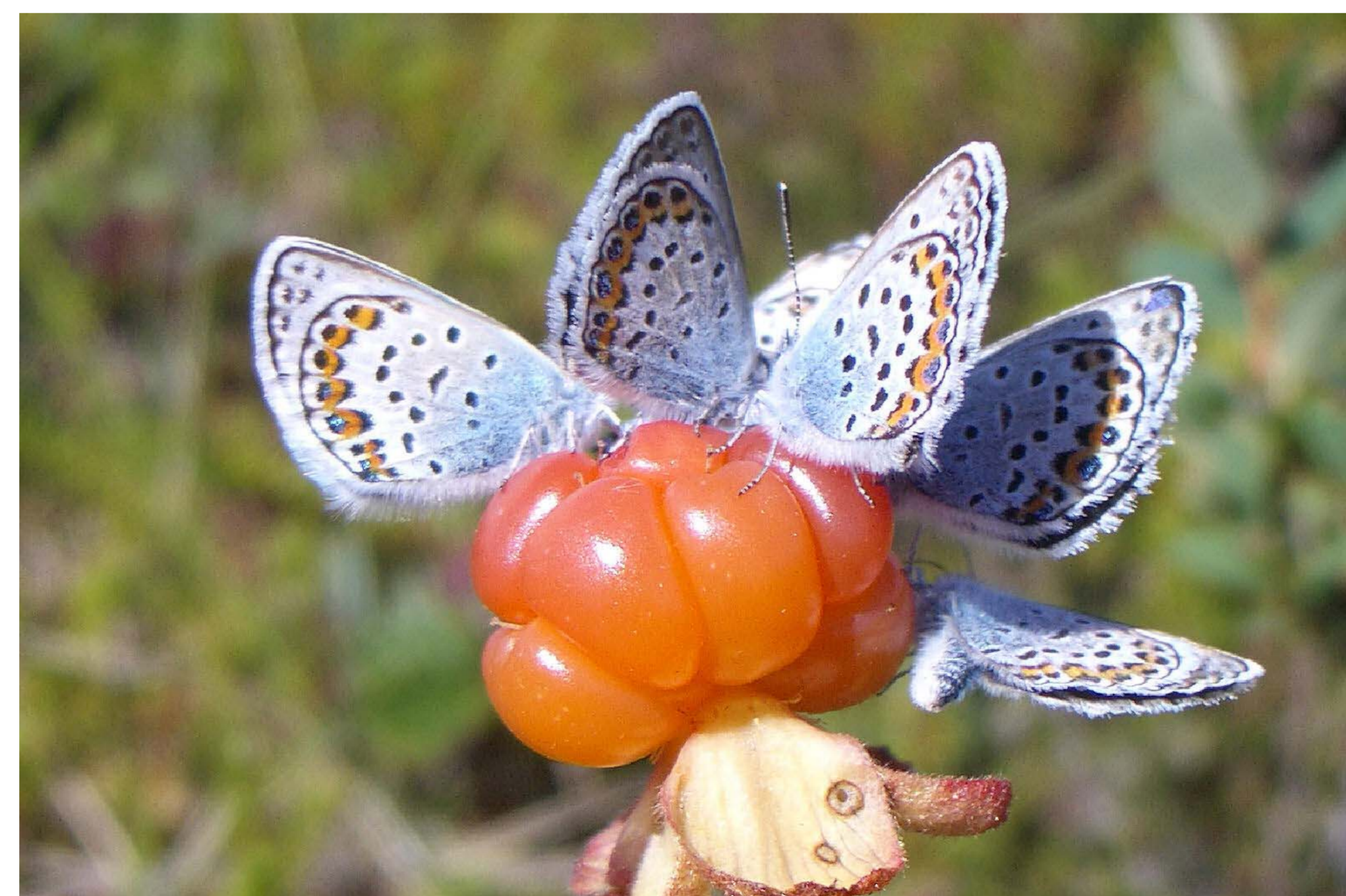


# Peatlands need water to live.



Peatlands cover 3% of the land surface of the Earth. Their peat contains more than 30% of all soil carbon. Wet peatlands cool their surroundings, filter the water that feeds them and provide a place to live to many rare species. The conservation of wet peatlands and the rewetting of drained peat soils serves our climate, our waters and our biological diversity. The **International Mire Conservation Group** acts worldwide to conserve and restore our peatlands.

[imcg.net](http://imcg.net)

